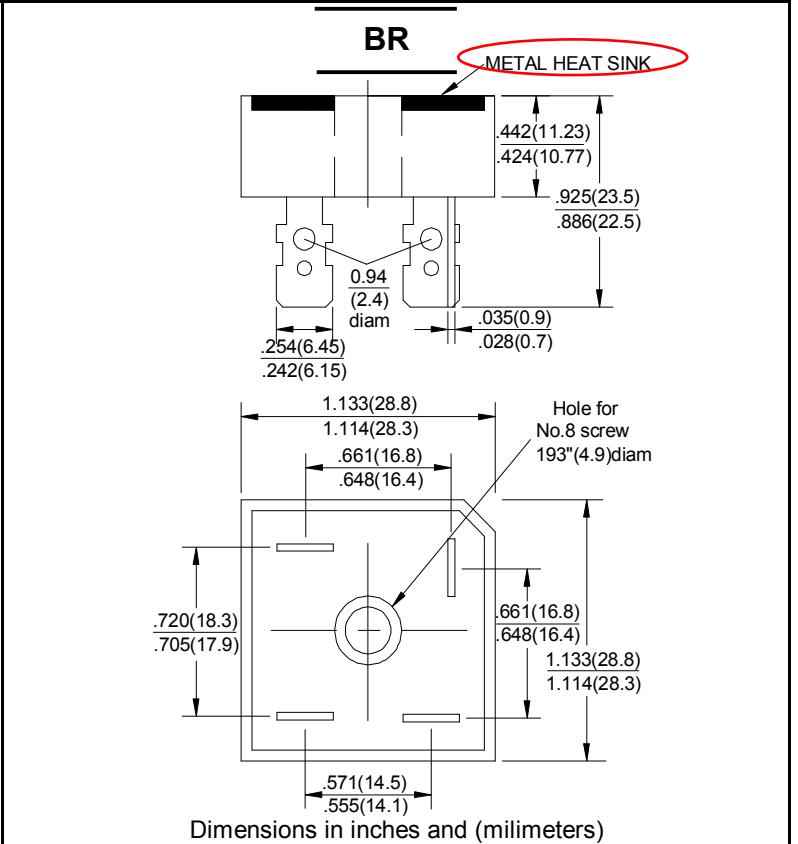


SILICON BRIDGE RECTIFIERS	REVERSE VOLTAGE - 50 to 1000Volts FORWARD CURRENT - 10/15/25/35/50 Amperes
----------------------------------	---

FEATURES

- Surge overload -240~500amperes peak
- Low forward voltage drop
- Mounting position: Any
- Electrically isolated base -2000 Volts
- Solderable 0.25" FASTON terminals
- Materials used carries U/L recognition



MAXIMUM RATINGS AND ELECTRICAL CHARACTERISTICS

Rating at 25°C ambient temperature unless otherwise specified.
 Resistive or inductive load 60HZ.
 For capacitive load current by 20%

CHARACTERISTICS	SYMBOL	BR										UNIT	
		BR	BR	BR	BR	BR	BR	BR	BR	BR	BR		
		10005	1001	1002	1004	1006	1008	1010	15005	1501	1502		
		1504	1506	1508	1510	25005	2501	2502	2504	2506	2508		
		2510	35005	3501	3502	3504	3506	3508	3510	50005	5001		
		5002	5004	5006	5008	5010							
Maximum Recurrent Peak Reverse Voltage	V _{RRM}	50	100	200	400	600	800	1000					V
Maximum RMS Bridge Input Voltage	V _{RMS}	35	70	140	280	420	560	700					V
Maximum Average Forward Rectified Output Current @T _c =55°C	I _(AV)	BR 10	10	BR 15	15	BR 25	25	BR 35	35	BR 50	50		A
Peak Forward Surge Current 8.3ms Single Half Sine-Wave Super Imposed on Rated Load	I _{FSM}	BR 10	240	BR 15	300	BR 25	400	BR 35	400	BR 50	500		A
Maximum Forward Voltage Drop Per Element at 5.0/7.5/12.5/17.5/25.0A Peak	V _F	1.1										V	
Maximum Reverse Current at Rated DC Blocking Voltage Per Element @T _A =25°C	I _R	10.0										µA	
Operating Temperature Rang	T _J	-55 to +125										°C	
Storage Temperature Rang	T _{STG}	-55 to +125										°C	

RATING AND CHARACTERISTIC CURVES
BR10/15/25/35/50A SERIES



FIG.1-MAXIMUM FORWARD SURGE CURRENT

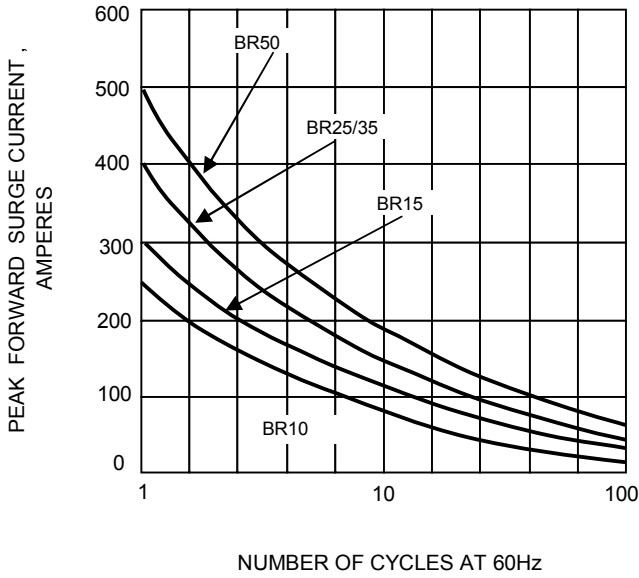


FIG.2- DERATING CURVE OUTPUT RECTIFIED CURRENT

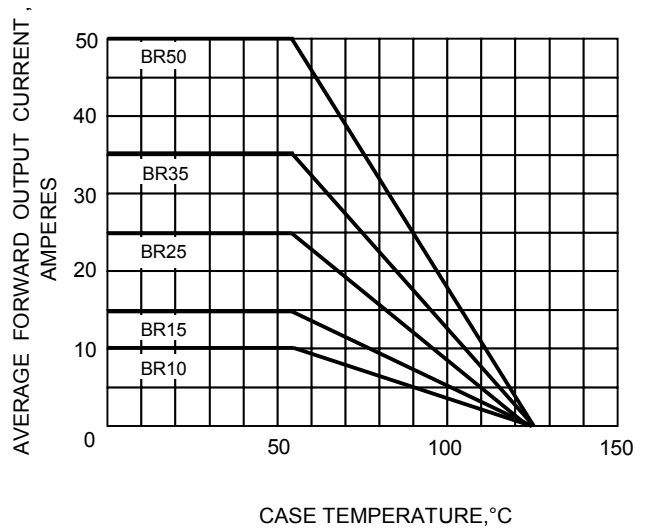


FIG.3-TYPICAL FORWARD CHARACTERISTICS

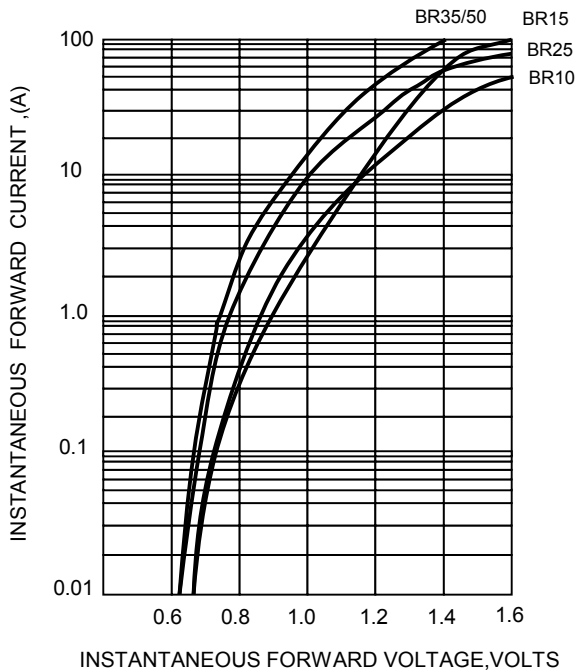


FIG.4-TYPICAL REVERSE CHARACTERISTICS

